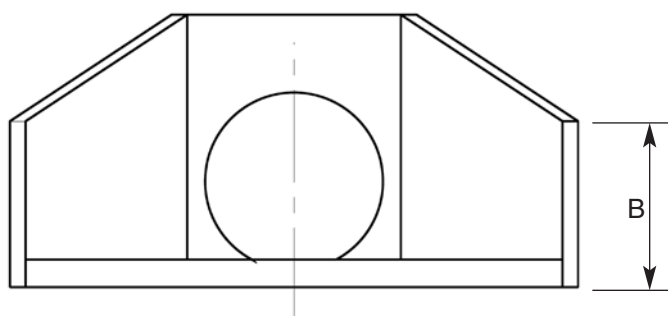
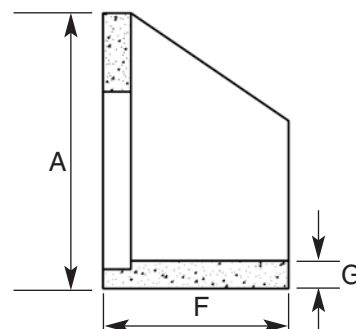


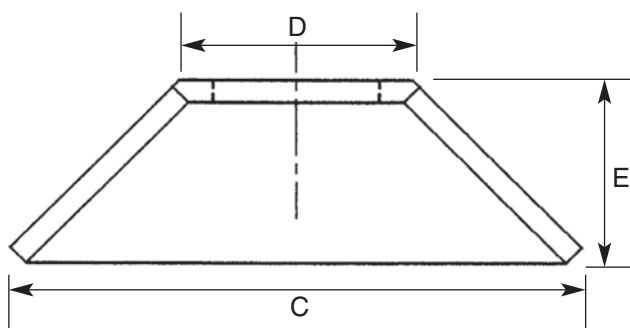
SINGLE HEADWALLS



ELEVATION



SECTION



PLAN

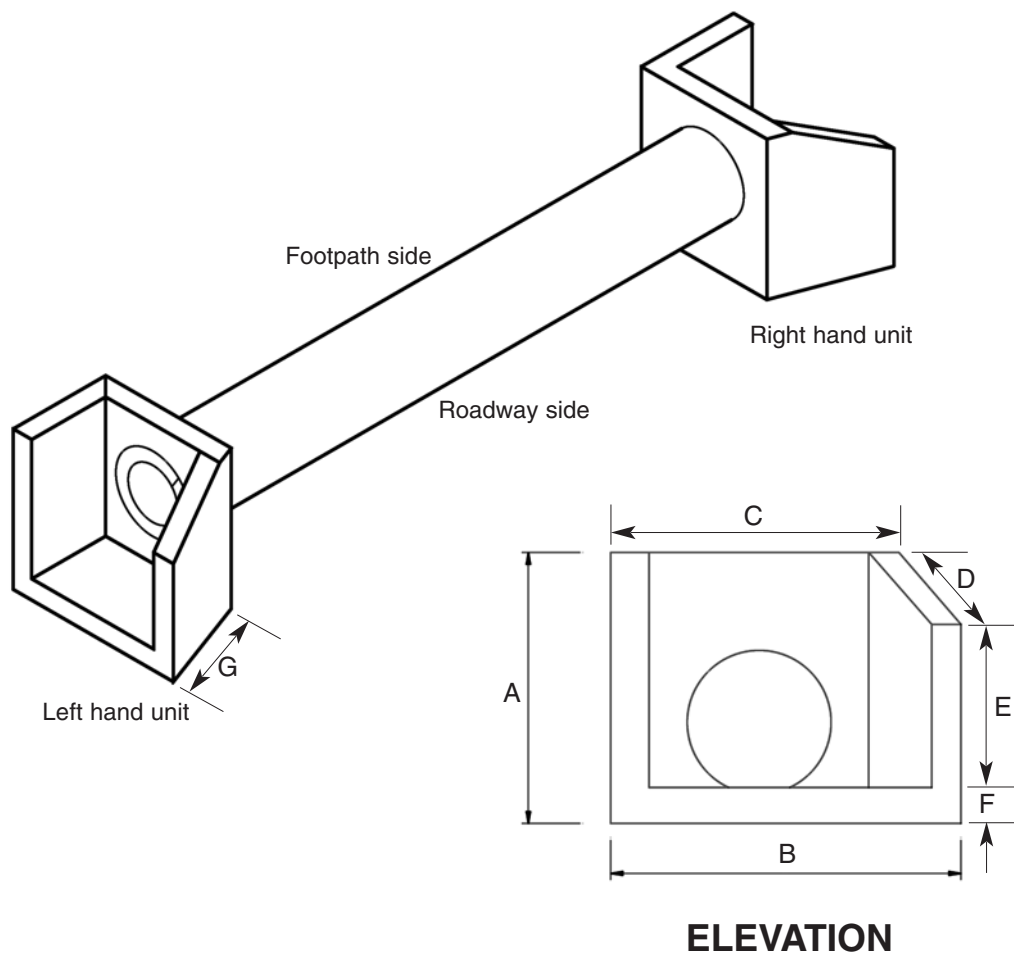
- Standard headwalls are designed for the spigot ends of pipes. A larger headwall may be required to accommodate socket end. Contact BCP for details.
- Custom designed Multicell headwalls can be manufactured where standard headwall is not suitable. Contact BCP with your requirements.

Order Code	Pipe Size mm Dia.	Dimensions							Mass kg
		A	B	C	D	E	F	G	
HWH-10150	150								215
HWH-10225	225	600	430	1200	510	580			210
HWH-10300	300								200
HWH-10375	375	890	500	1570	740	660			365
HWH-10450	450								355
HWH-10525	525	1200	910	1660	1020	745			470
HWH-10600	600								450
HWH-10675	675	1200	700	2240	1020	760			780
HWH-10750	750								755
HWH-10825*	825	1500	850	2880	1320	930			1420
HWH-10900*	900								1380
HWH-11050*	1050	1650	900	3240	1470	1035			2045
HWH-11200*	1200	1850	950	3820	1620	1250			2770
HWH-11350*	1350	2000	950	4390	1770	1460			4110
HWH-11500*	1500	2200	950	5110	2070	1670			5340
HWH-11650*	1650	2350	1000	5800	2220	1890			6630
HWH-11800*	1800	2450	1000	6270	2870	2100			7560
HWH-12100*	2100	2750	1100	7170	2670	2400			9750

Masses indicated are approximate only and may vary due to casting tolerances
*Special product made on request

DRIVEWAY HEADWALLS

Available to suit pipe sizes 200, 300, 375 and 450mm diameter.

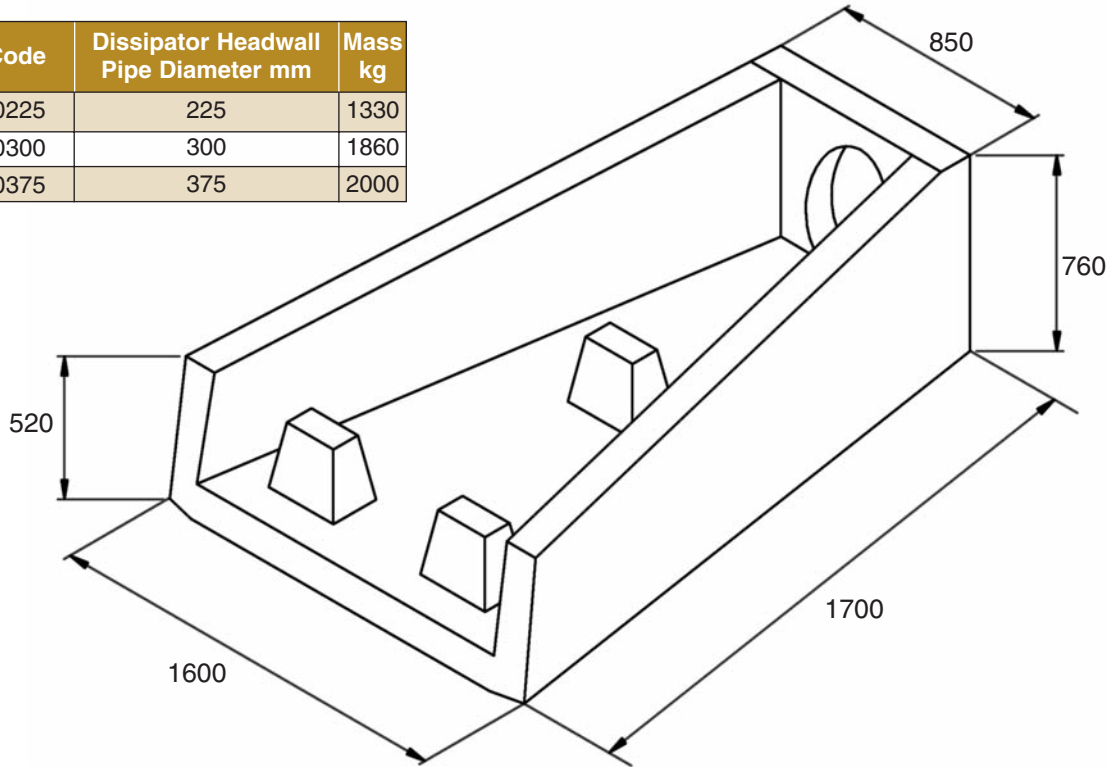


ELEVATION

Order Code	Description	Dimensions							Mass kg
		A	B	C	D	E	F	G	
HWL-10225	225 Headwall - left hand	565	650	100					100
HWR-10225	225 Headwall - right hand								
HWL-10300	300 Headwall - left hand	565	650	100					100
HWR-10300	300 Headwall - right hand								
HWL-10375	375 Headwall - left hand	720	730	125					125
HWR-10375	375 Headwall - right hand								
HWL-10450	450 Headwall - left hand	850	865	205					205
HWR-10450	450 Headwall - right hand								

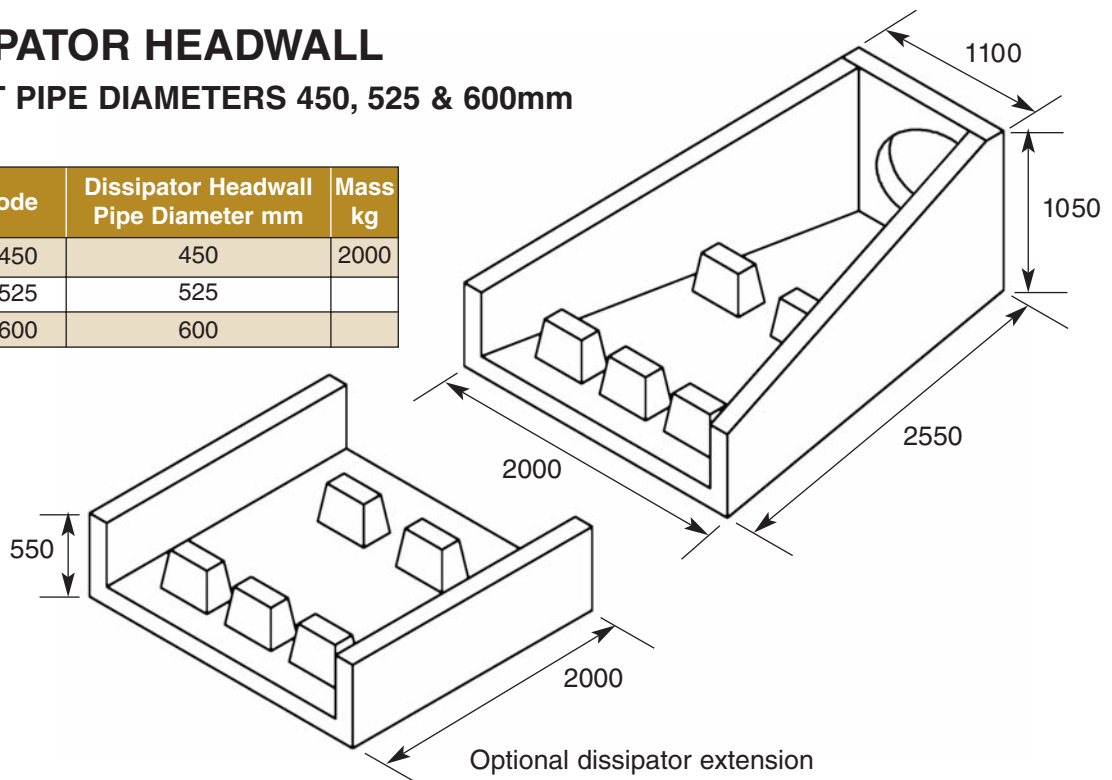
DISSIPATOR HEADWALL
TO SUIT PIPE DIAMETERS 225, 300 & 375mm

Order Code	Dissipator Headwall Pipe Diameter mm	Mass kg
HWD-00225	225	1330
HWD-00300	300	1860
HWD-00375	375	2000



DISSIPATOR HEADWALL
TO SUIT PIPE DIAMETERS 450, 525 & 600mm

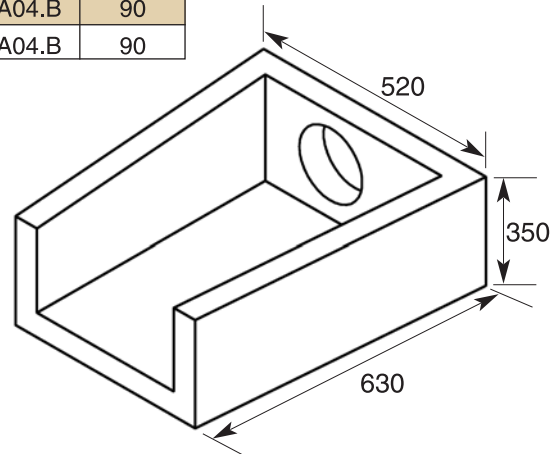
Order Code	Dissipator Headwall Pipe Diameter mm	Mass kg
HWD-00450	450	2000
HWD-00525	525	
HWD-00600	600	



RTA HEADWALLS

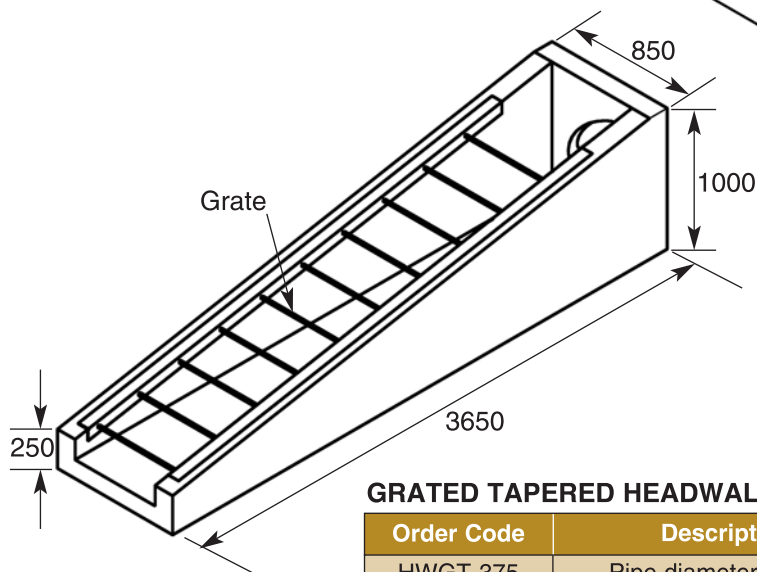
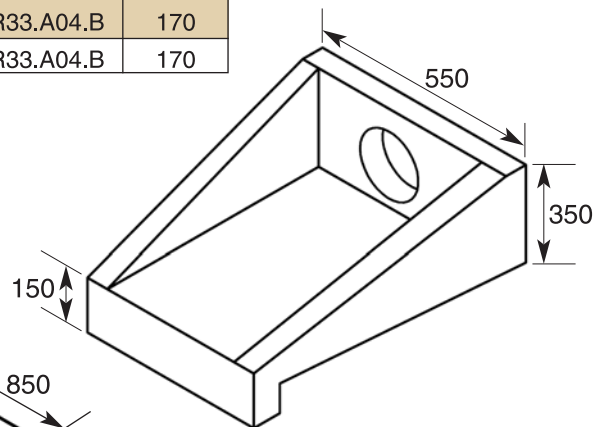
FLAT BATTER HEADWALL

Order Code	Description	RTA Dwg. No.	Mass kg
HWF-10065	To suit pipe diameter 65mm	MD.R33.A04.B	90
HWF-10100	To suit pipe diameter 100mm	MD.R33.A04.B	90



STEEP BATTER HEADWALL

Order Code	Description	RTA Dwg. No.	Mass kg
HWS-10065	To suit pipe diameter 65mm	MD.R33.A04.B	170
HWS-10100	To suit pipe diameter 100mm	MD.R33.A04.B	170



GRATED TAPERED HEADWALL

Order Code	Description	RTA Dwg. No.	Mass kg
HWGT-375	Pipe diameter 375mm	MD.R11.A26.A.1	
HWGT-450	Pipe diameter 450mm	MD.R11.A26.A.1	