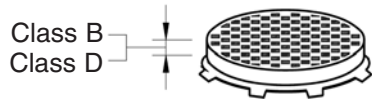
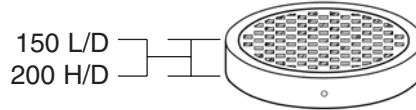


PRECAST ACCESS CHAMBERS

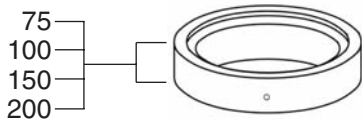
APPROVED BY WATER AUTHORITIES



Ductile Iron Covers



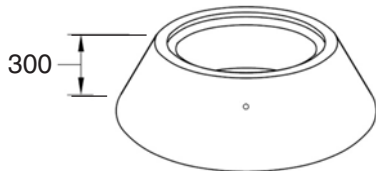
Ductile iron cover in concrete surround



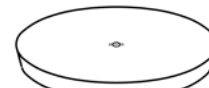
Make Up Rings



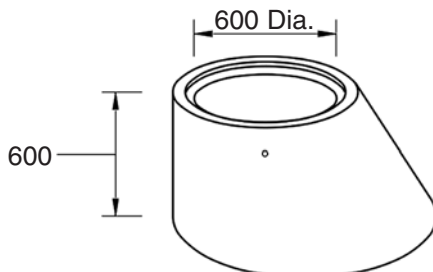
S.S. Lifting staple cover



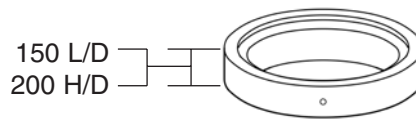
Squat Cone



Access covers



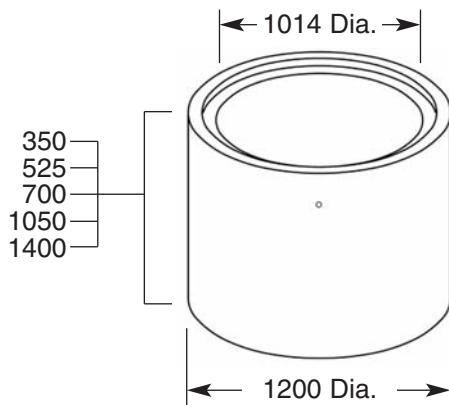
Straight Back Taper



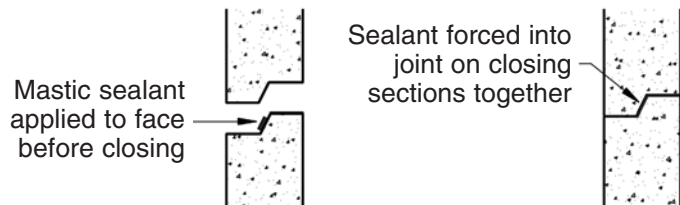
Access cover frame



Optional covers old style



Chamber Sections



NOTE: Section joint faces are painted with butyl coating to assist adhesion of sealant

PRECAST ACCESS CHAMBERS

Covers

Order Code	Description	Mass kg
MHC-DUC-B600CSWB	600 Dia Ductile cover & frame Class B	100
MHC-DUC-D600CSWB	600 Dia Ductile cover & frame Class D	140
MHC-00150	Light duty concrete access cover	80
MHS-00150	Light duty concrete access cover surround	90
MHC-00200	Heavy duty concrete access cover	130
MHS-00200	Heavy duty concrete access cover surround	130
MCI-00150	CI access cover & frame (Class B) in concrete	270
MCI-00200	CI access cover & frame (Class D) in concrete	360

Make Up Rings

Order Code	Description	Mass kg
MMR-00075	75 mm Make up ring	50
MMR-00100	100 mm Make up ring	70
MMR-00150	150 mm Make up ring	100
MMR-00200	200 mm Make up ring	140

Straight Back Taper

Order Code	Description	Mass kg
MSN-00600	600 Straight back cone - no steps	400
MSW-10600	600 Straight back cone - with 1 step	400
MSW-20600	600 Straight back cone - with 2 steps	400
MSC-00300	300 Squat cone	200

Chamber Sections

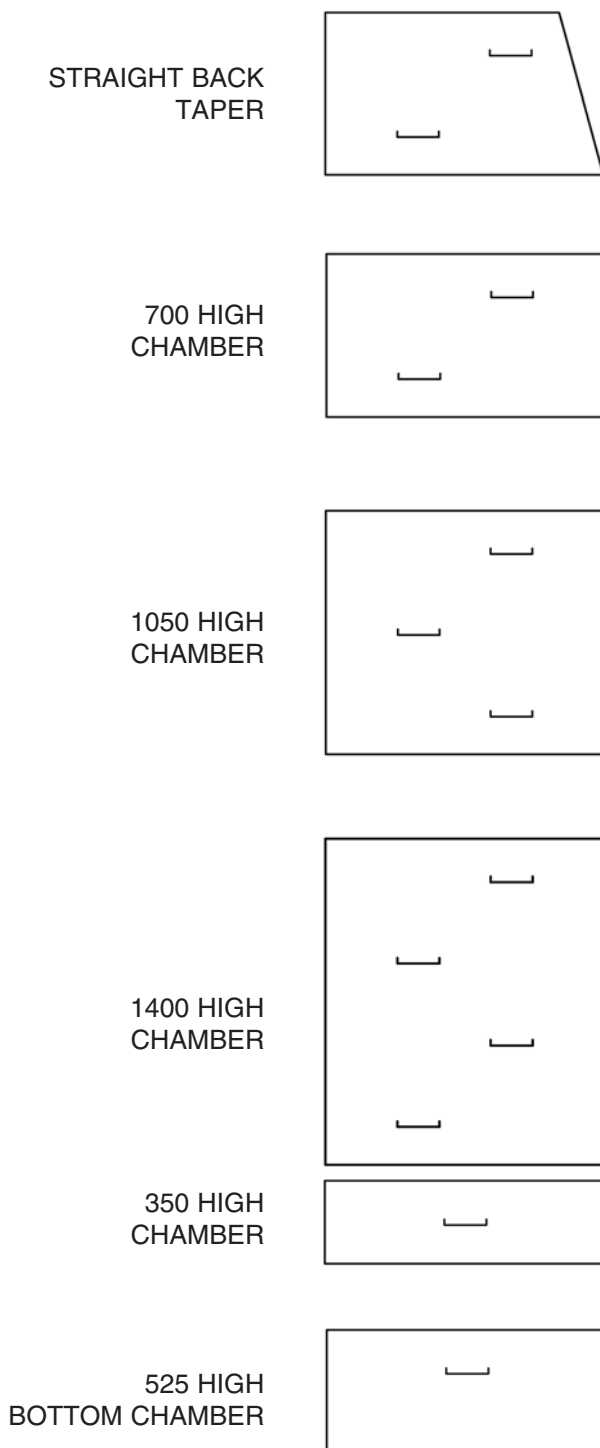
Order Code	Description	Mass kg
MCN-00350	350 Chamber - no steps	280
MCW-00350	350 Chamber - with steps	280
MCN-00525	525 Chamber - no steps	400
MCW-00525	525 Chamber - with steps	400
MCN-00700	700 Chamber - no steps	550
MCW-00700	700 Chamber - with steps	550
MCN-01050	1050 Chamber - no steps	850
MCW-01050	1050 Chamber - with steps	850
MCN-01400	1400 Chamber - no steps	1100
MCW-01400	1400 Chamber - with steps	1100

Miscellaneous

Order Code	Description
MSS-0000	Small sealant
MSL-0000	Large sealant
MST-0000	Manhole steps - loose

PRECAST ACCESS CHAMBERS

ARRANGEMENT OF SECTIONS WHEN FITTED WITH STEP-IRONS

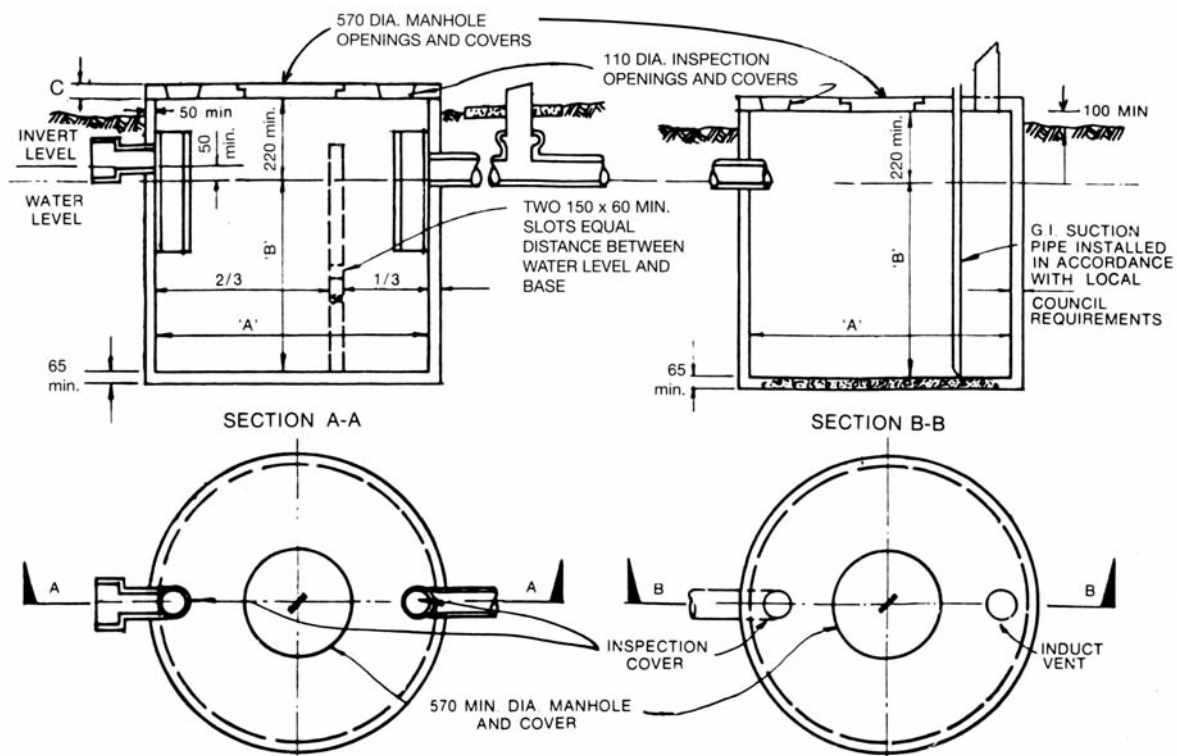


When fitted with step-irons, precast access chambers must be assembled in the correct order to maintain uniform step spacings.

By following the rules set out below, uniform step spacing will be achieved.

- The 525 high chamber can only be used as the bottom section of an access chamber.
- When used as the bottom section, a 350 high chamber section does not require a step.
- When used between other sections, a 350 high chamber section must have a step.
- A 350 or 1050 high chamber section must only be used as the lower section when used in conjunction with a 1400 or 700 high chamber section.
- A 1050 high chamber section cannot be used directly on top another 1050 high section.
- Section heights should be selected to minimise the number of joints.

SINGLE TREATMENT SEPTIC TANKS & HOLDING WELLS



SEPTIC TANKS

Cap. Litres	Order Code	Ext tank height	Liquid depth B	Int dia A	Lids C L/D H/D	Mass Kg
2050	STA-02100	1680	1200	1525	65 200	1840
2400	STB-02400	1460	1020	1790	85 200	2960
3350	STC-03350	1800	1360	1830	85 200	3020
4000	STD-04000	2130	1680	1830	85 200	3400

Cap. Litres	Lids			
	L/D	kg	H/D	kg
2050	SLS-00001	330	SLS-00002	1410
2400	SLL-00001	630	SLL-00002	1390
3300	SLL-00001	630	SLL-00002	1390
4000	SLL-00001	630	SLL-00002	1390

Risers			
300mm	kg	600mm	kg
SRA-00300	220	SRA-00600	330
SRB-00300	220	SRB-00600	330
SRC-00300	220	SRC-00600	330

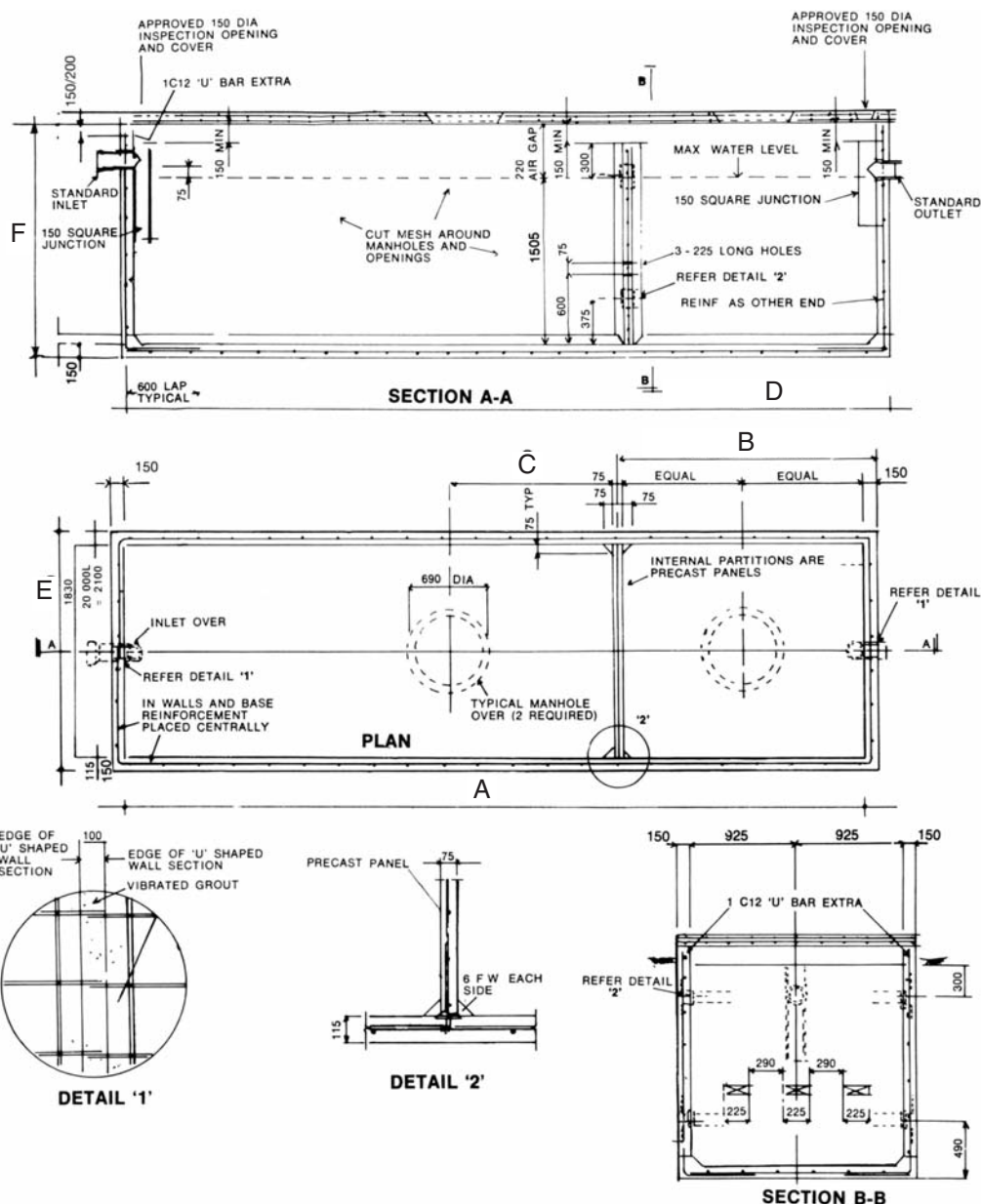
COLLECTION WELLS

Cap. Litres	Order Code	Ext tank height	Liquid depth B	Int dia A	Lids C L/D H/D	Mass Kg
2100	HWA-02100	1680	1200	1525	65 200	1840
2400	HWB-02400	1460	1020	1790	85 200	2350
3350	HWC-03350	1800	1360	1830	85 200	2710
4200	HWD-04200	2130	1680	1830	85 200	2480
4600	HWE-04600	2290	1810	1830	85 200	2850

Cap. Litres	Lids			
	L/D	kg	H/D	kg
2100	SLS-00001	330	SLS-00002	1410
2400	SLL-00001	630	SLL-00002	1390
3400	SLL-00001	630	SLL-00002	1390
4200	SLL-00001	630	SLL-00002	1390
4600	SLL-00001	630	SLL-00002	1390

Risers			
300mm	kg	600mm	kg
SRA-00300	220	SRA-00600	330
SRB-00300	220	SRB-00600	330
SRC-00300	220	SRC-00600	330

PRECAST CONCRETE SQUARE SECTION SINGLE TREATMENT SEPTIC TANKS WITH PARTITION WALL



Cap. Litres	Order Code	Dimensions						Tank kg	L/Duty Lid		H/Duty Lid	
		A	B	C	D	E	F		Code	kg	Code	kg
7500	STE-07500	3070	1075	770	3370	2150	1980	11100	SLE-00001	2660	SLE-00002	4410
9000	STF-09000	3680	1335	880	3980	2150	1980	12500	SLF-00001	3160	SLF-00002	5230
11300	STG-11300	3980	1640	880	4280	2150	1980	13600	SLG-00001	3380	SLG-00002	5600
13550	STH-13550	5500	1945	1290	5800	2150	1980	16240	SLH-00001	4650	SLH-00002	7650
16000	STI-16000	6400	2250	1490	6700	2150	1980	18290	SLI-00001	5300	SLI-00002	8800
20000	STJ-20000	7000	2250	1690	7300	2150	1980	19650	SLJ-00001	5800	SLJ-00002	9500

Beresford Concrete Products Pty Limited ABN 66 002 104 323 trading as

BCP Precast PO Box 537 Moorebank NSW 1875

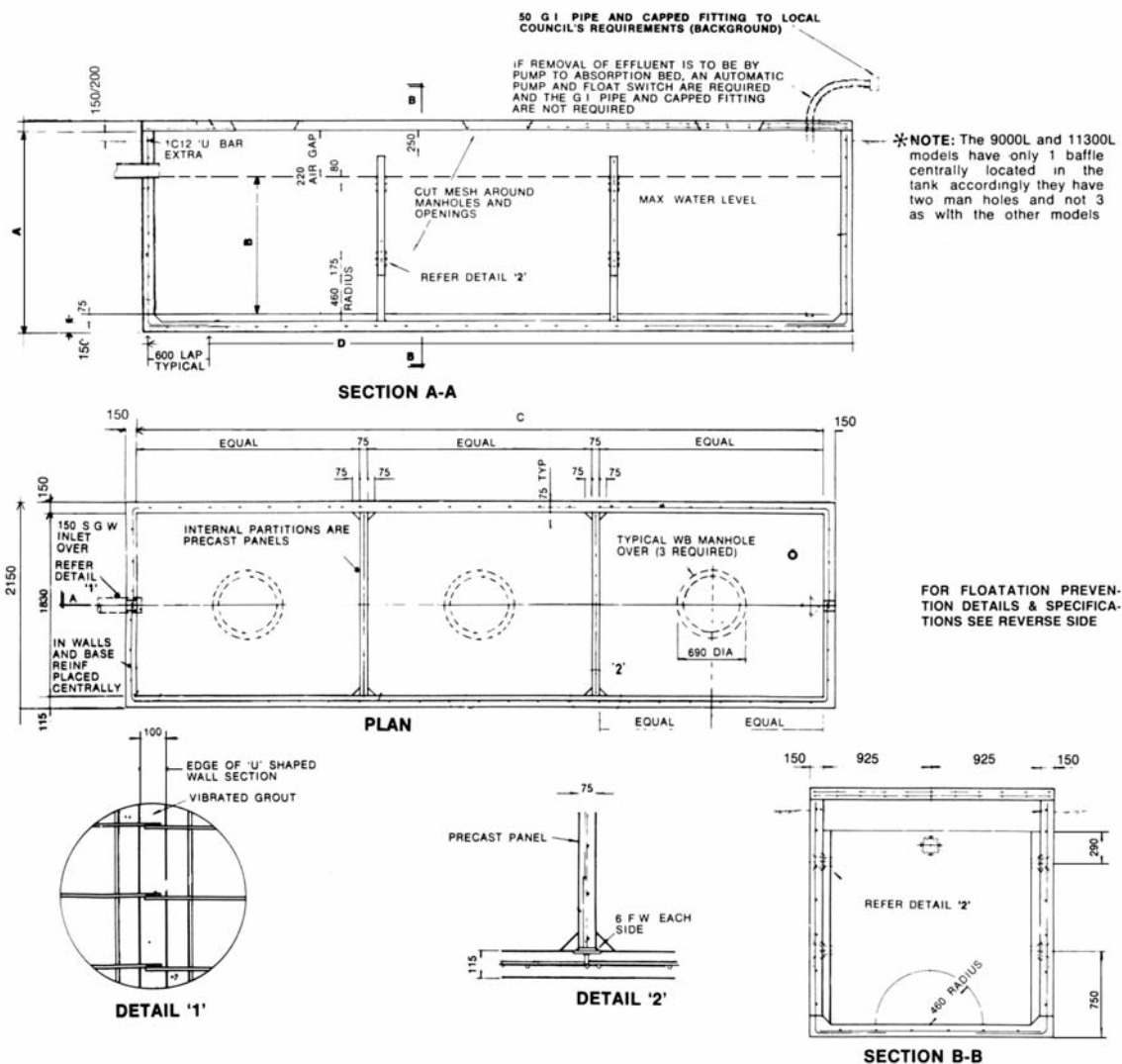
Phone: 1800 804 134

Fax: 1800 199 916

Email: sales@bcp.com.au

Web: www.bcp.com.au

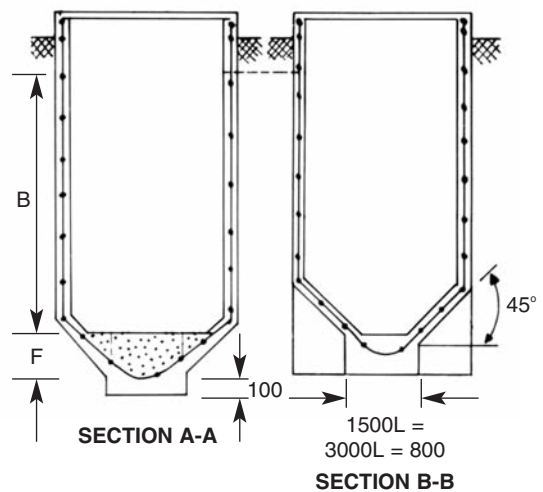
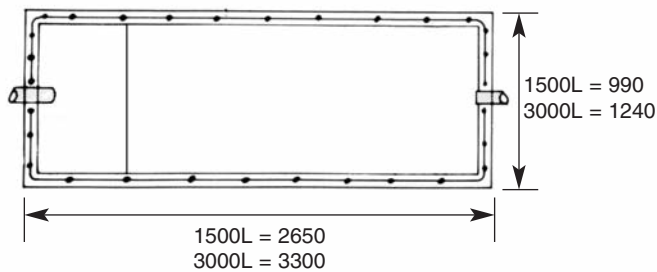
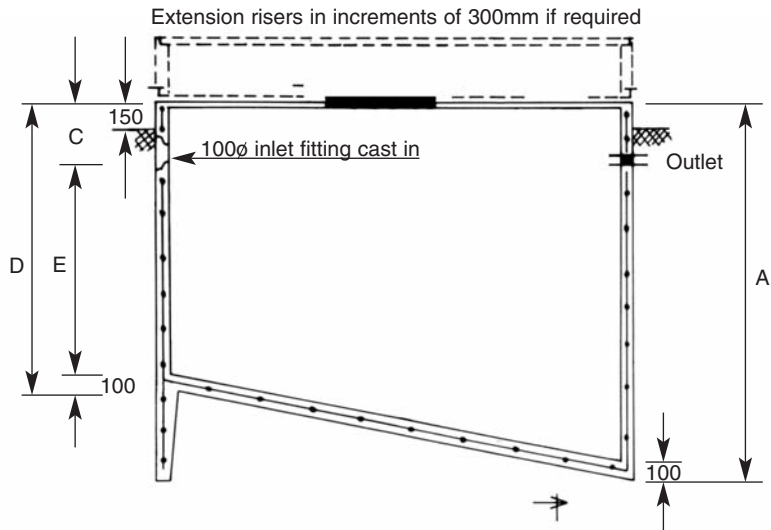
PRECAST CONCRETE SQUARE SECTION HOLDING WELLS



Cap. Litres	Order Code	Dimensions				Tank kg	L/Duty Lid		H/Duty Lid	
		A	B	C	D		Code	kg	Code	kg
7500	HWF-07500	1980	1100	3070	3370	10200	SLE-00001	2660	SLE-00002	4410
9000	HWG-09000	1980	1200	3680	3980	11300	SLF-00001	3160	SLF-00002	5230
11300	HWH-11300	1980	1500	3980	4280	12040	SLG-00001	3380	SLG-00002	5600
13550	HWI-13550	1980	1350	5500	5800	15630	SLH-00001	4650	SLH-00002	7650
15800	HWJ-15800	1980	1575	6400	6700	17490	SLI-00001	5300	SLI-00002	8800
20400	HWK-20400	1980	1625	7000	7300	18700	SLJ-00001	5800	SLJ-00002	9500
22600	HWL-22600	2350	1800	7000	7300	21600	SLJ-00001	5800	SLJ-00002	9500
25000	HWM-25000	2550	2000	7000	7300	23040	SLJ-00001	5800	SLJ-00002	9500
30000	HWN-30000	2850	2400	7000	7300	25300	SLJ-00001	5800	SLJ-00002	9500

*Acceptable by the NSW Health Department

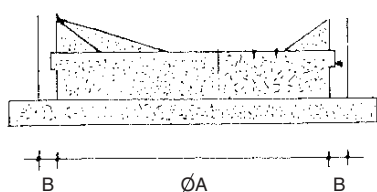
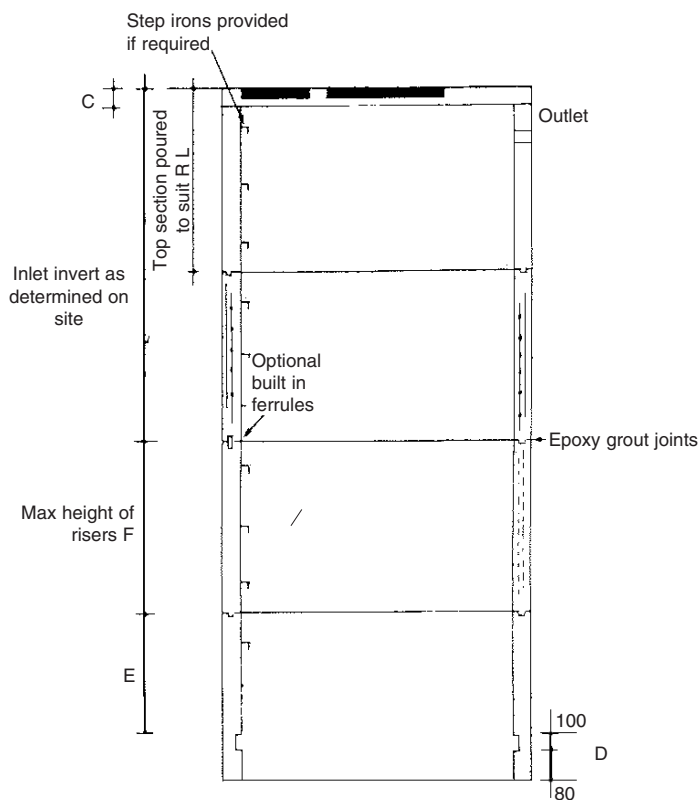
PRECAST CONCRETE COMMERCIAL SEWERAGE PUMPING WELLS



Cap. Litres	Order Code	Dimensions						Mass kg
		A	B	C	D	E	F	
1500	SPW1	2000					280	3800
3000	SPW2	2370	1740	250	1685	1335	280	6100

COMMERCIAL SEWERAGE PUMPING WELLS

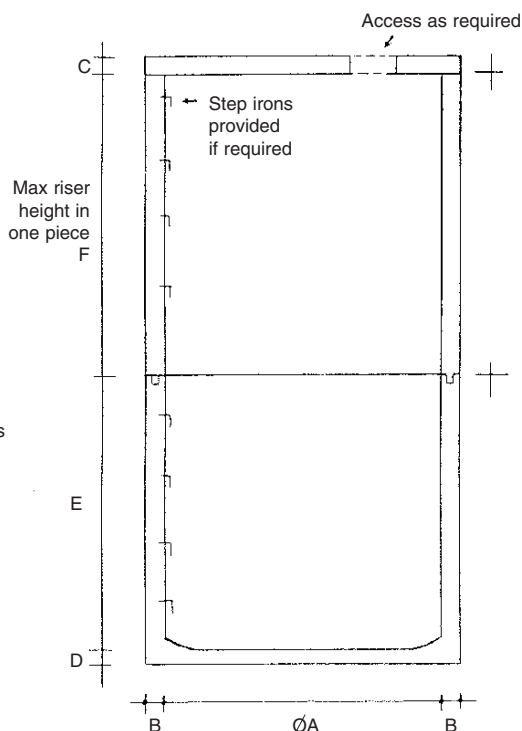
SECTIONAL ELEVATION SPW4 & SPW5



Inner base and bottom cast insitu by customer

TYPES SPW4 & SPW5

SECTIONAL ELEVATION SPW12, SPW3 & SPW24



Location of inlet and riser depths to be advised by client

TYPES SPW12, SPW3 & SPW24

Cap. Litres	Order Code	Dimensions						Mass kg
		A	B	C	D	E	F	
1350	SPW12	1200	120	195	120	1400	1200	2185
5000	SPW3	1800	150	375	150	2130	1900	7000
9000	SPW24	2400	150	375	150	2000	1900	8000

Cap. Litres	Order Code	Dimensions						Mass kg
		A	B	C	D	E	F	
13000	SPW4	3000	180	375	180	2100	1900	13200
19000	SPW5	3600	180	505	180	2100	1900	16500